

**XEROX®**

Technology | Document Management | Consulting Services

Phaser® 6120



color laser printer

Small size.  
Larger than life  
office color.



# Phaser 6120

## Color Laser Printer

Fill your office with brilliant color.

Introducing the Xerox Phaser 6120 color laser printer. This printer offers legendary Phaser color, outstanding media flexibility and a smart, compact design. Plus, it's so easy to install and use, it's the bright spot in any small office.



### Precise Phaser color

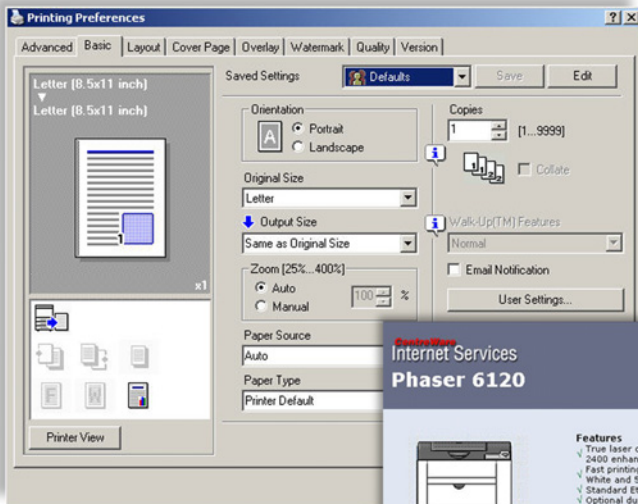
Why settle for “average” color when you can get exceptional quality color from the Xerox Phaser 6120 laser printer.

- Color that pops. Brilliant high resolution delivers amazing fine-line detail.
- Professional results. True-to-life color and Pantone certification mean that you'll always get the color you want.
- Affordable quality. This printer offers industry standard color tools that color professionals will appreciate. Not to mention a price tag small offices will love.

### Excellent media flexibility

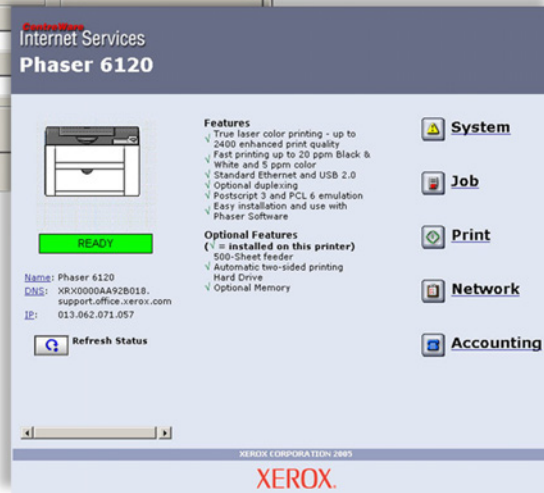
When it comes to media handling, most small office lasers offer the bare minimum. Not the Phaser 6120 laser printer. It makes no compromises.

- Custom jobs made easy. This printer comes with a standard 200-sheet multipurpose tray that supports media as narrow as 4 in. and as long as 14 in. And printing envelopes and labels is a cinch.
- One-sided printing not enough? This printer enables two-sided printing with a reasonably priced duplexer.
- Supports heavy weights. The Phaser 6120 laser printer prints on 60-lb. cover stock (163 gsm) with the same ease as standard paper.
- Presentations with punch. This printer produces lush, full-color transparencies that make any presentation come to life.
- Big jobs welcome. High-output users can opt for an affordable 500-sheet feeder, bringing the total input capacity to 700 pages.



Printing setup is simple and automatic with the Phaser 6120.

CentreWare IS makes it easy to manage printers remotely.



## All-around ease

From installation to everyday use, the Phaser 6120 printer is a no-sweat office solution.

- Easy, easy, easy. The Phaser 6120 was carefully engineered from the ground up to make it simple to use.
- Pre-installed toners and imaging unit make this printer virtually plug-and-play. It's so easy, you'll have it up and printing in minutes.
- Stay seated. The embedded CentreWare IS web server enables IT administrators and end-users to manage printers from their own computers.
- Troubleshooter. PrintingScout\* delivers instant printing alert information right to your workstation.

\*Available early 2006

- Smart design. No more reaching behind the printer to replace a print or drum cartridge. This printer was designed with front-access for user interventions. Even jam clearance is a snap.
- Mac friendly. It has easy-to-use drivers for both PCs and Macs and supports all major print description languages, including PostScript® 3™ language support, PCL® 6, PCL 5c and PCL 5e.
- No waiting. A powerful 300 Mhz processor processes images fast. Connect the way you want with parallel, high-speed USB 2.0 and Ethernet 10/100 Base-TX – all standard.

## Designed for greatness

The Phaser 6120 makes a statement in any office. It offers excellent media handling with optional add-ons to enhance your office productivity. Who would have thought something so small could pack in so much?

- 1 Variety encouraged. The 200-sheet multipurpose tray 1 supports a wide range of media; from transparencies to labels, card stock to envelopes.
- 2 Business growing? Add on this optional 500-sheet feeder as your needs expand.
- 3 Print and go for a coffee break. The 200-sheet output tray allows for longer unattended operation.

Double up. This printer offers optional automatic two-sided (duplex) printing.

Optional hard disk drive offers advanced features such as Saved Print and Secure Print, plus flawless collation on multi-set jobs.



Phaser 6120 printer shown with optional 500-sheet feeder

# Phaser® 6120



Authorized Dealers  
New York - New Jersey - CT  
TEL 212-267-0500



CONFIGURATIONS	Phaser 6120N
<b>Speed</b>	Up to 5 ppm color / 20 ppm black-and-white
<b>Duty cycle</b>	Up to 35,000 pages / month
<b>Paper Handling</b>	
Paper input Standard	200-sheet Multipurpose Tray 1
Optional	500-sheet Tray
Automatic 2-sided printing	Optional
<b>Print</b>	
First page out	As fast as 22 seconds color / 13 seconds black-and-white
Resolution	2400 Enhanced
Processor	300 MHz, 32 bit RISC
Language Support	PostScript® 3™ language support, PCL® 6 / PCL 5c / PCL 5e emulations
Connectivity	Parallel, USB 2.0, 10/100 Base-TX Ethernet
Memory (Std / Max)	128 MB / 640 MB
Internal Hard Drive	Optional (20 GB or greater) Hard drive supports Font storage, Forms, Electronic collation, PDF direct printing, Proof / Saved / Secure printing
Print Features	Booklet printing, Watermarks, Custom page sizes, Scaling, Scale-to-fit, N-up printing, Graphical toner level gauges, Built-in support links, PrintingScout® Alert notification
<b>Warranty</b>	One-year Quick Exchange, Xerox Total Satisfaction Guarantee

## SUPPLIES AND OPTIONS

Consumables	
<b>Standard-Capacity Toner Cartridges*</b>	
Cyan (1,500 pages)	113R00689
Magenta (1,500 pages)	113R00691
Yellow (1,500 pages)	113R00690
<b>High-Capacity Toner Cartridges*</b>	
Cyan (4,500 pages)	113R00693
Magenta (4,500 pages)	113R00695
Yellow (4,500 pages)	113R00694
Black (4,500 pages)	113R00692

\*Capacities are approximate, based on 5% coverage on an A-sized page.

The toner cartridges are part of the Xerox Green World Alliance supplies recycling program. For more information, please visit the Green World Alliance web site at [www.xerox.com/gwa](http://www.xerox.com/gwa)

Routine Maintenance Items	
Imaging Unit (up to 20,000 pages black/up to 10,000 pages color: assumes average job size of 3 pages. Higher average job sizes will increase yields.)	108R00691
Options	
500-Sheet Feeder	
Letter	097S03484
A4	097S03489
Hard Disk Drive	097S03485
Duplex Kit (includes 128 MB Memory)	097S03483

## SPECIFICATIONS

### Network/Software

**Printer management** CentreWare® IS Embedded Web Server, PrintingScout Alert Notification®, CentreWare Web

**Font capabilities** 139 Resident PostScript fonts and 81 PCL

**Printer drivers** Windows 98/Me/NT 4.0/2000/Server 2003/XP Pro/XP Home SP 1 or greater, Mac OS 9.2/OS X version 10.2 or greater, Linux Red Hat/SuSe, Walk-up printing driver

**Language support** PostScript 3, PCL® 6, PCL 5c, PCL 5e emulations

### Paper handling

**Maximum input capacity** 700 sheets

**Multipurpose Tray 1 (standard)** 16 – 43 lb. Bond and up to 60 lb. Cover, (60 – 163 gsm), Transparencies, Labels, Envelopes, Card stock. Media sizes: Letter, Legal, Folio, Executive, Statement, Index card, A4, A5, A, B5-ISO, B5-JIS. Envelopes: #10 Commercial, Monarch, DL, C5, C6, custom sizes 3.63 x 5.83 in. (92 x 148 mm) to 8.5 x 14 in. (216 x 356 mm)

**500-Sheet tray (optional)** 16 – 24 lb. Bond (60 – 90 gsm). Media sizes: Letter, A4.

**Automatic two-sided printing (optional)** (shipped with an additional 128 MB memory) 20 – 24 lb. Bond (75 – 90 gsm). Media sizes: Letter, A4, Folio Legal 13 in., Legal 14 in. from all trays

**Maximum output capacity** 200 sheets

### Special features

**PrintingScout®** Instantly displays pop-up help if attention is needed throughout print job

**Productivity tools** Booklet printing, Watermarks, Custom page size default registers, Scaling and scale-to-fit, N-up printing, Forms, Graphical toner level gauges, Built-in support links. Optional hard drive supports: Font storage, Forms, Color profiles, Job accounting, Electronic collation, PDF direct printing (level 1.3, 1.4), Proof print, Saved print and Secure print.

### Color controls

**Color standards** PANTONE®-approved solid-color simulations. Postscript device-independent color.

**Selectable print-quality modes** 2400 Enhanced; 600 dpi

### Operating

**Dimensions** width: 17.4 in. (442 mm), height: 13.4 in. (341 mm), depth: 15.6 in. (395 mm), weight (with consumables): 44.5 lbs. (20.2 kg); weight (packaged) 54 lbs. (24.4 kg)

**Environment** Temperature Non-operating: -20° – 40° C (-4° – 104° F), Operating: 10° – 32° C (50° – 90° F); Relative Humidity: Non-operating: 10 – 85% RH, Operating: 10 – 80% RH

**Noise level** < 35 dB standby, < 54 dB running

**Electrical** 200 – 240 VAC / 100 – 127 VAC at 50/60 Hz; Power consumption: Printing 380 W (monochrome), 290 W (color), Idle 90 W, Power Saver 27 W, ENERGY STAR® qualified printer

**Regulatory** Listed to UL 60950-1/CSA 60950-1-03, 1st Edition, Class 1 Laser Product, FCC Part 15, Class B, CE marked in accordance with the Low Voltage Directive 73/23/EEC and EMC Directive 89/336/EEC, Section 508 ADA.

### Total Satisfaction Services

One-year Quick Exchange Warranty, online web technical support and telephone support. Innovative service offerings include on-site and extended Service Agreements. The Phaser 6120 printer is backed by the Xerox Total Satisfaction Guarantee.

## OUTSTANDING MEDIA CAPABILITY

Take full advantage of the Phaser 6120 color printer with our comprehensive Xerox Paper and Specialty Media portfolio, which includes a selection of papers, labels and transparencies that come in a variety of weights and sizes. For a current listing of all recommended printing media visit:

[www.xerox.com/office/6120supplies](http://www.xerox.com/office/6120supplies)

\*Available early 2006



Copyright © 2005 Xerox Corporation. All rights reserved. Xerox®, CentreWare®, Phaser®, the TekColor® icon, Total Satisfaction Services™ and Walk-Up™ are registered trademarks or service marks of Xerox Corporation in the U.S. and/or other countries. Adobe®, PostScript® and PostScript® 3™ are either registered trademarks or trademarks of Adobe Systems Incorporated in the United States and/or other countries. Mac OS™ is a registered trademark of Apple Computer Incorporated. PCL™ is a registered trademark of Hewlett-Packard Company. Windows®, Windows NT® and Windows Server™ are registered trademarks or trademarks of Microsoft Corporation. Red Hat® is a registered trademark of Red Hat, Inc. SUSE™ is a trademark of SUSE LINUX Products GmbH, a Novell business. PANTONE® and other Pantone, Inc. trademarks are the property of Pantone, Inc. ENERGY STAR® is a U.S. registered mark. As an ENERGY STAR Partner, Xerox Corporation has determined that these products meet the ENERGY STAR guidelines for energy efficiency. Other product and/or company names used herein are trademarks of their respective owners. The information in this brochure is subject to change without notice. 1/06 610P723630C 612BR-01UD